

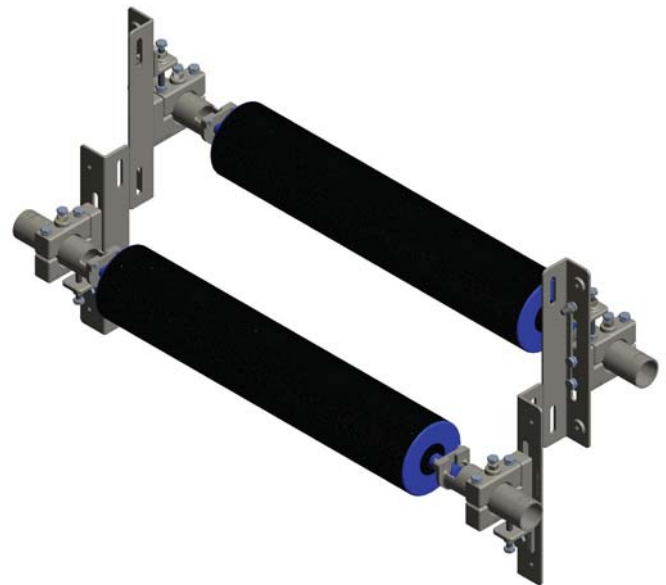
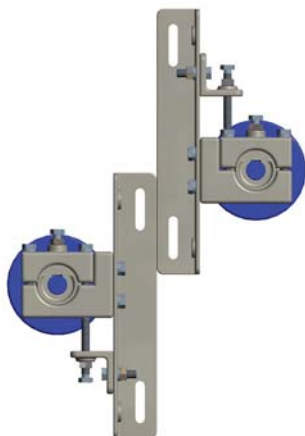
TUFF STABILISING ROLLER ASSEMBLY

The TUFF Dual Stabilising Roller Assembly takes all the performance enhancing technology of the single to produce exceptional results in extremely challenging situations. The dual model provides belt stability from above and below the conveyor belt. This is the perfect solution for where secondary and tertiary cleaner systems cannot be installed close to a pulley. It ensures the cleaner tips remain in constant contact with the belt and also saves the day in cases where severe belt harmonics threaten stability, efficiency and productivity.

Both single and dual roller configurations are engineered to suit uni or bi-directional conveyors.

Our Performance

- Reduces extreme belt vibration and harmonics that can compromise belt cleaner system performance
- Dual stabilising rollers can be easily retrofitted or factored in at the design phase
- Promotes greater efficiency and productivity by allowing secondary belt cleaners to operate at their optimum performance level
- Mounting system allows rollers to be backed away from the belt during belt change out.



Our Edge

- We use high grade stainless steel in all construction including key components
- Roller mounts are adjustable; they adapt to onsite rollers so there's no need for specific spares
- TuffStuff locking plate secures rollers in position for duration of operation or during belt tension removal
- TuffStuff is 100% Australian-owned and operated.